

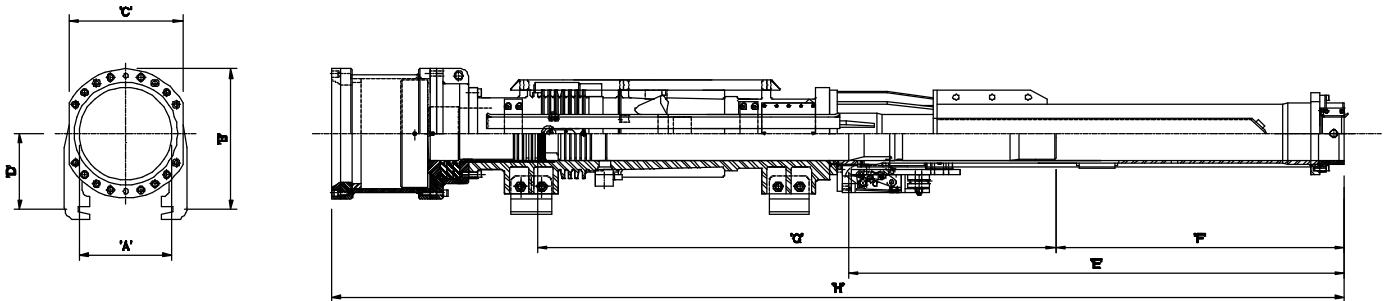
**B-3005 General Specifications**

<b>Performance</b>		
Ram Weight X Max. Stroke	34,500 ft•lb	47 kN•m
Impact energy	21,533 ft•lb	29 kN•m
Ram weight/mass	3,000 lb	1,400 kg
Maximum ram stroke	11.5 ft	3.5 m
Impact block weight/mass	802 lbs	364 kg
Blows per minute	36-60	36-60
<b>Operating Weight</b>		
Total operating weight/mass	11,000 lb	4,989 kg
Weight of tool box	150 lb	68 kg
Total shipping weight/mass	11,150 lb	5,056 kg
<b>Capacity</b>		
Fuel tank capacity	16 gal (U.S)	62 liters
Fuel consumption	1.4gal/hr.	5.3 liters/hr.
Oil tank capacity	1.9 gal (U.S)	7.3 liters
Oil consumption	0.16 gal/hr.	0.6 liters/hr.



***Impact Hammers B-3005***

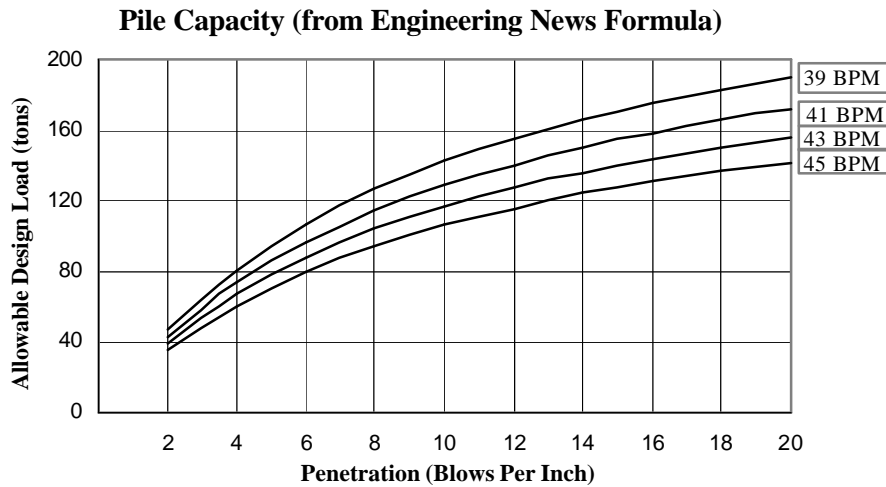
**Dimensional Specifications**



Dimensions		Model-3005						
Units	A	B	C	D	E	F	G	H
Imperial	21.5 in	27.5 in	24 in	15 in	109 in	63.7 in	114 in	222.7 in
Metric	546 mm	699 mm	610 mm	380 mm	2769 mm	1618 mm	2896 mm	5657 mm

<b>B-3005 3000 lb Piston</b>					
BPM	Stroke (ft)	Potential Energy (ft.lb)	Velocity (ft/s)	Maximum Impact Force (tons)	Impact Energy (ft.lb)
35	11.8	35,400	22.5	243	24,780
36	11.2	33,600	22.0	238	22,547
37	10.6	31,800	21.5	233	21,533
38	10.0	30,000	21.0	228	20,543
39	9.5	28,500	20.5	222	19,577
40	9.0	27,000	20.0	217	18,633
41	8.6	25,800	19.5	211	17,714
42	8.2	24,600	19.0	206	16817
43	7.8	23,400	18.5	200	15943
44	7.5	22,500	18.0	195	15093
45	7.1	21,300	17.5	190	14266

Stroke height is a function of soil resistance and may not be attainable in certain driving conditions.  
 Standard Operating Range.



**WEAP Input Data**

Ram			Stroke				
Weight	Length	Diameter	Minimum	Maximum	Efficiency		
3.00 Kips	113.80 in	11.70 in	4.00 ft	11.80 ft	0.800		
Impact Block Information							
Weight	Length	Diameter	C.o.R	RoundOut			
0.80 Kips	25.87 in	11.81 in	0.900	0.0100			
Diesel Hammer Combustion Chamber Information							
Combustion Chamber Inf.			Combustion		A I Volume		
C-Stroke	Area	Volume	Delay	Duration	ExpCoef	Ignition	Fin.Comb
15.75 in	109.61 in <sup>2</sup>	141.00 in <sup>3</sup>	0.000	0.000	1.250	155.1 in <sup>3</sup>	186.7 in <sup>3</sup>
Pressure							
Atmosphere	FS 1	FS 2	FS 3	FS 4	FS 5	Coeff. Conf.	
14.7 psi	1400 psi	1300 psi	1200 psi	1100 psi	1000 psi	1.0	
Helmet And Hammer Cushion Properties							
Helmet		Hammer Cushion					
Weight	Material	WEAP Input	CoR	Cushion Area	Thickness		
1.60 Kips	Steel	30000 Ksi	0.70	280 in <sup>2</sup>	6.00 in		