

# BERMINGHAM

**FOUNDATION SOLUTIONS  
SINCE 1897**

## PROJECT REPORT

**Thorold Cogeneration Plant  
Thorold, Ontario**

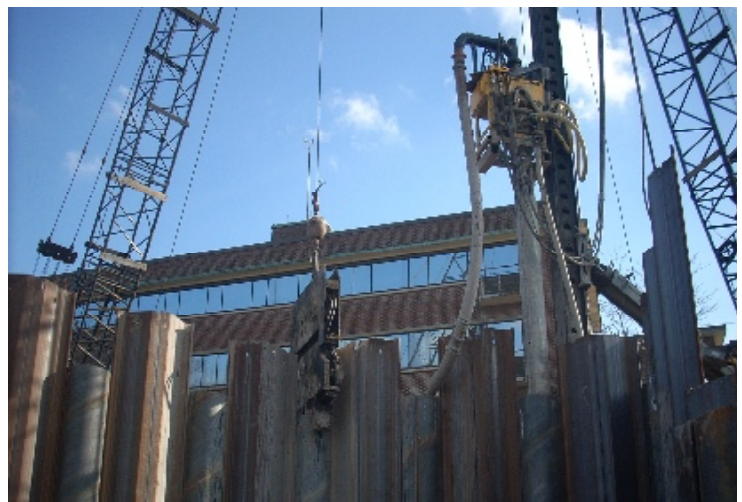
Once again, Birmingham Foundation Solutions was responsible for a quick and successful installation of a combi wall - this time at the Thorold Cogeneration Plant in Thorold Ontario.

The combi wall, which consists of a series of pipe piles interlocked with sheet piles, was required to shore up the roadway to the Power Station in addition to functioning as an interface between the water returning from the cogeneration facility to the Welland Canal.



The combi wall during construction.

The permanent nature of the combi wall necessitated a design that could withstand normal service loads, such as vehicle traffic on the adjacent roadways, in addition to other possibilities such as earthquake loading and the complete draining of water from the Welland Canal. By utilizing the combi wall design, a longer unsupported distance between restraints on the shoring wall can be successfully utilized – in this case, the vertical distance from the bedrock to the tie-back was over 30 feet! Thanks to Birmingham's construction and manufacturing experience, a custom fabricated template was utilized for the pipe pile installation, saving both time and money.



During the construction process, a wide variety of Birmingham built equipment was used, including a custom template for locating the piles (left) and Birmingham reverse-circulation drills (right).

**Birmingham**  
FOUNDATION EQUIPMENT



**enerc**ret®  
foundations that work

**STAT**NAMIC

Phone: 1-905-528-7924

Toll Free: 1-800-668-9432

Web: [www.berminghammer.com](http://www.berminghammer.com)